

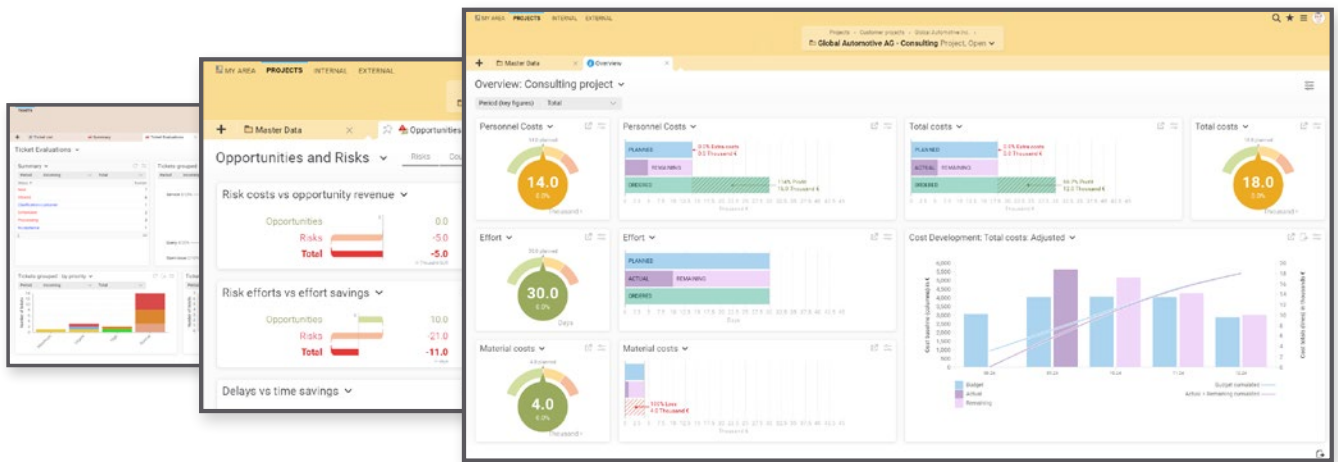
YOUR ENTIRE **PROJECT LIFE CYCLE** IN ONE SOLUTION

INTERN	PROJECT	CRM & SERVICES
Work organisation <ul style="list-style-type: none"> > Kanban > BPMN-processes > Checklists & workflows > Calendar & agenda > Expenses > Time recording 	Preparation & project application <ul style="list-style-type: none"> > Idea management > Environmental analysis > Stakeholder analysis > Objectives > Risk management 	Marketing & Sales <ul style="list-style-type: none"> > Contact database > Acquisitions & quotations > Sales evaluations > Newsletter > Surveys
Personnel management <ul style="list-style-type: none"> > Working hours accounts > Absences > Personnel costs > Skills 	Planning & implementation <ul style="list-style-type: none"> > Time planning > Effort plan > Cost and order plan > Resource management > File storage 	Invoicing service <ul style="list-style-type: none"> > Fixed price & effort > Material costs & expenses > Digital incoming invoices > XRechnung & ZUGFeRD > Revenue analysis
Administration <ul style="list-style-type: none"> > Contract management > Asset management 	Controlling <ul style="list-style-type: none"> > Project- & Multi-project management > Portfolio management > Graphical evaluations > Tabular evaluations > Reporting 	Servicemanagement <ul style="list-style-type: none"> > Ticket system > Evaluations > SLA settings
PROCESS MODELS <ul style="list-style-type: none"> > Scrum > Kanban > IPMA > PRINCE2 > PMI 	SUPPORTED INTERFACES <ul style="list-style-type: none"> > Jira > MS Exchange; MS 365 (Teams, Outlook) > DATEV Online > GitLab > XML, CSV, JDBC > SOAP, REST 	PROTOCOLS <ul style="list-style-type: none"> > LDAP, OpenID Connect, SAML, Passkey > CTI <p>> Not available in BCS.start</p>

With Projektron BCS and Projektron BCS.start, we offer a cross-industry OnPremise or SaaS solution for your project management. You can find more information here: projektron.de/en/bcs/industry

AWARDS





Projektron BCS.start is available for 20 euros per licence per month (SaaS) or 200 euros per licence (on-premise). The edition is aimed at project-oriented companies and teams with up to 15 employees. It provides a **central tool** that supports all essential work processes - far beyond project work. For a detailed list of features, see projektron.de/en/bcs/editions



AI-SUPPORTED
USER HELP



SUPPORT



DOCUMENTATION AND
VIDEO TUTORIALS

SELECTION OF WELL KNOWN CUSTOMERS

